

# SLIDING DOOR HARDWARE - FACsrl



PART #	DESCRIPTION	UNIT
SMALL HARDWARE		
4RC/45	TRACK ROLLER - 300 KG/PAIR CAPACITY	EACH
ST45	TRACK ROLLER BRACKET	EACH
45.3	TRACK - 3M SECTION	EACH
45.6	TRACK - 6M SECTION	EACH
SP45	TRACK WALL BRACKET	EACH
SS45	TRACK CEILING BRACKET	EACH
LARGE HARDWARE		
4RC/55	TRACK ROLLER - 600 KG/PAIR CAPACITY	EACH
ST55	TRACK ROLLER BRACKET	EACH
55.3	TRACK - 3M SECTION	EACH
55.6	TRACK - 6M SECTION	EACH
SP55	TRACK WALL BRACKET	EACH
SS55	TRACK CEILING BRACKET	EACH

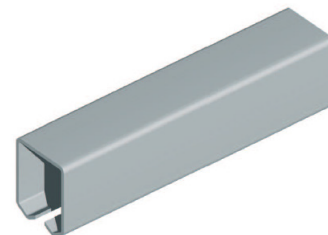
4RC/45 & 4RC/55



ST45 & ST55



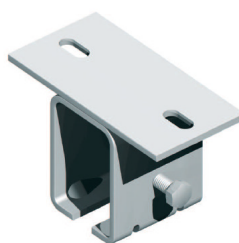
45.3, 45.6, 55.3 & 55.6



SP45 & SP55



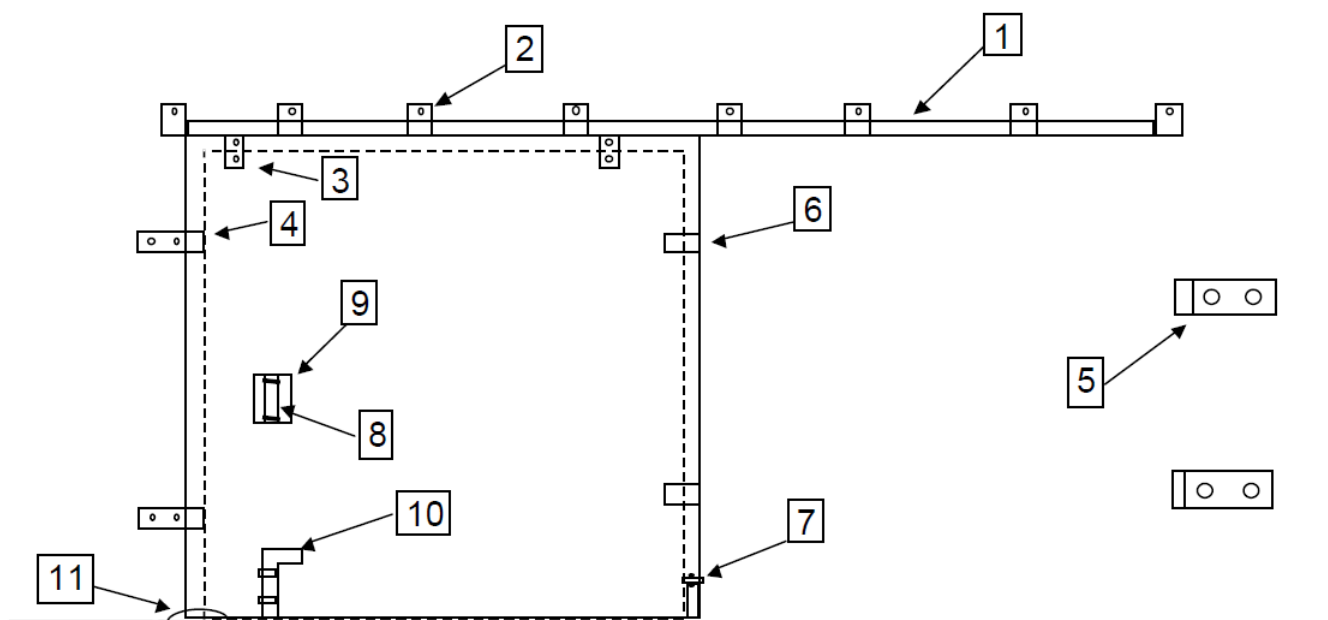
SS45 & SS55



# SLIDING DOOR HARDWARE - RICHARDS-WILCOX



ITEM #	DESCRIPTION	PAGE
1	TRACK	F.4
2	TRACK BRACKETS	F.5
3	HANGERS	F.6
4	BINDERS	F.7
5	BUMPERS	F.7
6	BUMPER SHOES	F.7
7	STAY ROLLERS	F.8
8	HANDLES - BOW	F.8
9	HANDLES - FLUSH	F.8
10	CANE BOLTS & LOCKS	F.9
11	FLOOR GUIDES	F.9
11	#30 ROUND TRACK & HARDWARE	F.11



**NOTE: IF TWO DOORS OPERATE IN A SINGLE TRACK (BI-PARTING) THE BINDERS (#4) WOULD NOT BE USED; HOWEVER, A CENTRE DLOOR GUIDE SHOULD BE ADDED (SEE PAGE F.)**

**F.2 - V0316**

**ddsupplies.ca**

ALL PRICING AND INFORMATION CONTAINED IS SUBJECT TO CHANGE WITHOUT NOTICE.

# SLIDING DOOR HARDWARE - RW SELECTION CHART



DESCRIPTION	DOOR WEIGHT IN LBS									
	125	250	350	400	550	700	2000	1000	4000	4000
TRACK	31	50	31	31	75	33	I BEAM	333	I BEAM	888.00
1 WHEEL HANGER		735								
2 WHEEL HANGER	021									
4 WHEEL HANGER			321	323	27B	150	1029	160	1029 1 TON	888A
ROLLER BEARINGS	021	735	321	323						
BALL BEARINGS					27B	150	1029 1/2 TON	160	1029 1 TON	888A
FRAME: FORMED STEEL	021	735	321	323		150	1029 1/2 TON	160	1029 1 TON	
FRAME: FORGED STEEL					27					888A
APRON: ADJUSTABLE		735	321	323	27B	150	1029 1/2 TON	160	1029 1 TON	888A
APRON: HINGE SUSPENSION	021		321							
APRON: PENDANT BOLT		735		323	27B	150	1029 1/2 TON	160	1029 1 TON	888A
SWIVEL PENDANT		735								888A
NO APRONS		735		323	27B	150	1029 1/2 TON	160	1029 1 TON	888A
HANGERS	2	2	2	2	2	2	2	2	2	2
BRACKET SPRINGS	2'	1'	2'	2'	2'	2'		2'		5'

## HOW TO USE CHART:

THE VERTICAL COLUMNS ARE HEADED 'DOOR WEIGHT IN LBS'. ON THE LEFT HAND SIDE OF THE HORIZONTAL SECTIONS IN THE CHART THE VARIOUS HANGER FEATURES ARE SHOWN.

THE NUMBERS SHOWN AT AN INTERSECTION POINT OF THE VERTICAL COLUMN AND A HORIZONTAL SECTION ARE THE CATALOGUE NUMBERS OF THOSE HANGERS AVAILABLE WHICH MEET THE PARTICULAR REQUIREMENT.

ONCE A HANGER HAS BEEN SELECTED, BASED ON THE DOOR WEIGHT AND THE MOST DESIRABLE DESIGN FEATURE, FURTHER CHECKING IN THE VERTICAL COLUMN FOR THE RE-APPEARANCE OF THE SAME NUMBER WILL QUICKLY REVEAL THE OTHER FEATURES THIS HANGER HAS TO OFFER.

NOTE: 'DOOR WEIGHT IN LBS' IS BASED ON THE ASSUMPTION THAT TWO HANGERS ARE USED ON EACH INDIVIDUAL DOOR.

## SLIDING DOOR HARDWARE - TRACK



PART #	DESCRIPTION	UNIT
31X6	#31 TRACK - 6'	EACH
31X8	#31 TRACK - 8'	EACH
31X10	#31 TRACK - 10'	EACH
31X12	#31 TRACK - 12'	EACH
75X8	#75 TRACK - 8'	EACH
75X10	#75 TRACK - 10'	EACH
75X12	#75 TRACK - 12'	EACH
33X6	#33 TRACK - 6'	EACH
33X8	#33 TRACK - 8'	EACH
33X10	#33 TRACK - 10'	EACH
333X6	#333 TRACK - 6'	EACH
333X8	#333 TRACK - 8'	EACH
333X10	#333 TRACK - 10'	EACH
888X10	#888 TRACK - 10'	EACH
50X6	#50 TRACK - 6'	EACH
50X10	#50 TRACK - 10'	EACH
31EB	END BLIND	EACH
33EB	END BLIND	EACH
1X31C	LOCK JOINT CLIP	EACH
1X33C	LOCK JOINT CLIP	EACH
22X33C	LOCK JOINT CLIP	EACH

## SLIDING DOOR HARDWARE - TRACK BRACKETS



PART #	DESCRIPTION	UNIT
1X31	TRACK BRACKET	EACH
18X31	TRACK BRACKET	EACH
5X31	TRACK BRACKET	EACH
5X31LJ	TRACK BRACKET C/W L.J. CLIP	EACH
22X31	TRACK BRACKET	EACH
33X31	TRACK BRACKET	EACH
1X33	TRACK BRACKET	EACH
18X33	TRACK BRACKET	EACH
5X33	TRACK BRACKET	EACH
22X33	TRACK BRACKET	EACH
33X33	TRACK BRACKET	EACH
1X333	TRACK BRACKET	EACH
18X333	TRACK BRACKET	EACH
5X333	TRACK BRACKET	EACH
22X333	TRACK BRACKET	EACH
1X888	TRACK BRACKET	EACH
18X888	TRACK BRACKET	EACH

## SLIDING DOOR HARDWARE - HANGERS



PART #	DESCRIPTION	UNIT
021	HANGER	EACH
321	HANGER	EACH
323	HANGER	EACH
323S	TRUCK & PENDANT	EACH
27B1	HANGER	EACH
27B2	HANGER	EACH
27B	TRUCK & PENDANT	EACH
235X3	HANGER	EACH
235X5	HANGER	EACH
235S	TRUCK & PENDANT	EACH
150B1	HANGER	EACH
150B2	HANGER	EACH
150B	TRUCK & PENDANT	EACH
160B1	HANGER	EACH
160B2	HANGER	EACH
160B	TRUCK & PENDANT	EACH
888A	HANGER	EACH
735	HANGER	EACH
1029X1/2	HANGER - 1/2 TON	EACH
1029X1	HANGER - 1 TON	EACH

## SLIDING DOOR HARDWARE - BINDERS



PART #	DESCRIPTION	UNIT
82X2	BINDER	EACH
82X3	BINDER	EACH
82X4	BINDER	EACH
82X5	BINDER	EACH
82X7	BINDER	EACH
89	BINDER	EACH

## SLIDING DOOR HARDWARE - BUMPERS

PART #	DESCRIPTION	UNIT
69	BUMPER	EACH

## SLIDING DOOR HARDWARE - BUMPER SHOES

PART #	DESCRIPTION	UNIT
72	BUMPER SHOES	EACH

## SLIDING DOOR HARDWARE - STAY ROLLERS



PART #	DESCRIPTION	UNIT
54	STAY ROLLER	EACH
66	STAY ROLLER	EACH
68	STAY ROLLER	EACH
153	STAY ROLLER	EACH
154	STAY ROLLER	EACH

## SLIDING DOOR HARDWARE - HANDLE BOW

PART #	DESCRIPTION	UNIT
71	HANDLE	EACH
81X1	HANDLE	EACH
191	HANDLE	EACH

## SLIDING DOOR HARDWARE - HANDLE FLUSH

PART #	DESCRIPTION	UNIT
70	FLUSH PULL	EACH
470	FLUSH PULL	EACH



## SLIDING DOOR HARDWARE - BOLTS



PART #	DESCRIPTION	UNIT
128S	BOLT	EACH
513	BOLT - TOP & BOTTOM	PAIR
514X2	TOP SPRING BOLT	EACH
514X3	TOP SPRING BOLT	EACH
524X0	BOTTOM CANE BOLT	EACH
524X2	BOTTOM CANE BOLT	EACH
524X3	BOTTOM CANE BOLT	EACH

## SLIDING DOOR HARDWARE - FLOOR GUIDES

PART #	DESCRIPTION	UNIT
271	FLOOR GUIDE	EACH
671	FLOOR GUIDE	EACH

## SLIDING DOOR HARDWARE - HINGES



PART #	DESCRIPTION	UNIT
03X0X12	HINGE	EACH
03X3SX18	HINGE	EACH
03X3SX24	HINGE	EACH
03X3SBBX36	HINGE	EACH
734X10	HINGE	EACH
03X5X15	HINGE	EACH
03X10X24	HINGE	EACH
03X01X16	HINGE	EACH
434WMBBX48	HINGE	EACH
434BLBBX48	HINGE	EACH
03X09X8	HINGE	EACH
700X12	HINGE	EACH
03X07X18	HINGE	EACH
03RX12	HINGE	EACH
03RX24	HINGE	EACH

## SLIDING DOOR HARDWARE - LATCHES

PART #	DESCRIPTION	UNIT
123	LATCH	EACH
152	LATCH	EACH
125	LATCH	EACH
227L	LATCH	EACH

## SLIDING DOOR HARDWARE - ROUND TRACK #30



PART #	DESCRIPTION	UNIT
111-0062	ROUND TRACK - 6'	EACH
111-0063	ROUND TRACK - 8'	EACH
111-0064	ROUND TRACK - 10'	EACH
111-0065	ROUND TRACK - 12'	EACH

## SLIDING DOOR HARDWARE - BRACKETS #30

PART #	DESCRIPTION	UNIT
114-0305	SIDE BRACKET	EACH
114-0306	TOP BRACKET	PAIR
114-0307	END COVER	EACH
114-0308	FLASHING CLIP	EACH
114-0309	FLASHING 10'	EACH

## SLIDING DOOR HARDWARE - HANGERS #30

PART #	DESCRIPTION	UNIT
7-6015	TRUCK & PENDANT	EACH
7-6016	HANGER C/W APRON	EACH
7-6017	TRUCK & PENDANT	EACH